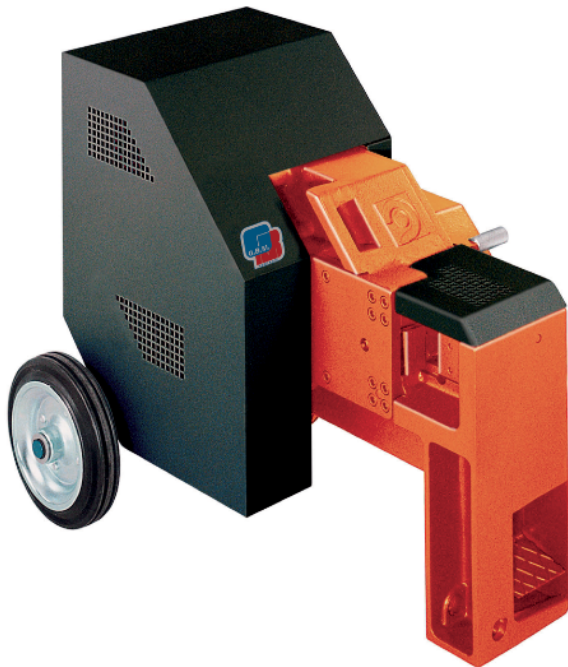


# CUTTING MACHINE

## CUTTING MACHINE CUT 30 E



### GENERAL INFORMATION

The main body of this cutting machine is one-block in high-quality cast steel. The cutting blades, made in special hardened steel, are designed to cut both small and big diameter iron. The gears and the moving parts are in wear-resistant steel

General characteristics	
Blade speed per 1'	110/110
power KW	2,2/1,5
weight Kg	230/230

Cutting capacity					
Iron	N° bars	N° bars	N° bars	N° bars	N° bars
	1	2	3	4	5
Res. 650 N/mm <sup>2</sup>	∅ max 26/24	∅ max 20/14	∅ max 16/12	∅ max 12/10	∅ max 10/10
Res. 850 N/mm <sup>2</sup>	∅ max 22/20	∅ max 16/12	∅ max 14/10	∅ max 12/10	∅ max 10/10