

---

# *Scaffolding*

*Accessories and couplings*











# *Scaffolding*



# Manufacturing scaffolding.



QUICK ASSEMBLY



MODULAR SYSTEM



SAFETY

**We - at GBM - have been manufacturing and selling construction scaffolding for more than 60 years.**

For years, our scaffolding have been used across the world for construction and maintenance works; our wide range of accessories will help you solve any challenges you may be faced with at the worksite including external brackets for cantilevered solutions and unloading decks at different heights of the building.

The GBM line of scaffolding comes with diversified scaffolding designed to meet your needs as a constructor.

GBM pin-type and bushing-type scaffolding are just what you need for a safe facade scaffolding that is quick and easy to use.

On the other hand, GBM pipe-coupling scaffolding is the ideal solution for those in need of a variable geometry modular system.



## Bushing-type scaffolding

Bushing-type scaffolding. The easiest scaffolding to use due to its standardisation and the fact that it is quick to assemble and disassemble.



## Pin-type scaffolding

Pin-type scaffolding. Standard scaffolding consists of metal frameworks with predefined height and depth. Quick to assemble, quick to disassemble.



## Pipe-coupling scaffolding

Pipe-coupling scaffolding, with their variable geometry obtained by connecting pipes by means of special couplings they can take any direction and angle.



# Bushing-type scaffolding, pin-type scaffolding and pipe-coupling scaffolding: how they differ.

**Different configurations, same supreme quality.**

**However, each type is designed to perform at its best in different fields and applications.**

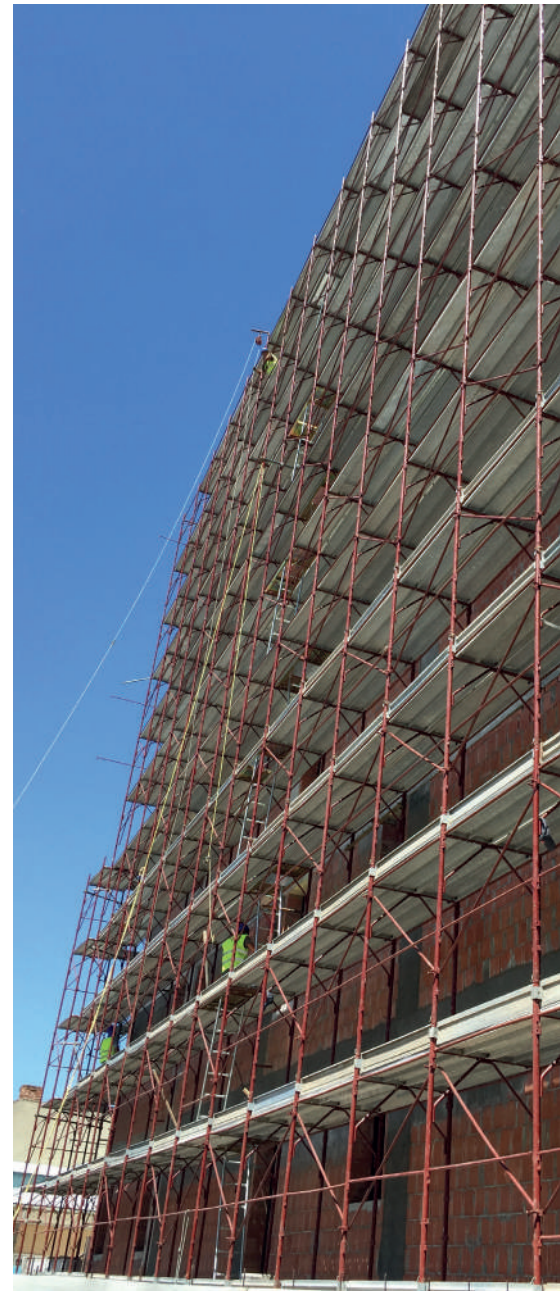
Scaffolding is used for different purposes and applications. We - at GBM - manufacture the following main types of scaffolding:

**Fixed scaffolding with prefabricated frameworks:** it is obtained by connecting several metal frameworks with standard height and depth on which the bases and parapets are fixed. It is the easiest scaffolding to use. Being standardised, easy to assemble and disassemble, it does not require special manpower skills. However, the user guidelines provided in the respective documents, i.e. the “scaffolding instructions booklet” must be strictly complied with.

This category includes:

- » **bushing-type scaffolding** (in which horizontal ledgers and diagonal braces connecting the frame - at the ends - pins to be inserted into the rings - the “bushings” - present on the frames)
- » and **pin-type scaffolding** (in which horizontal ledgers and diagonal braces feature - at the ends - holes to be fitted onto the pins present on the frames).

**Pipe-coupling scaffolding:** obtained by connecting the tubes to each other and obtaining this connection by coupling. This is a variable geometry and modular scaffolding that enables reaching any extension, height, and connecting the components thereof in any direction and angle on the three spatial dimensions: its modularity enables adjustment thereof to any facade or product, simplifying if not even enabling activities that would be otherwise almost impossible to perform. However, these advantageous solutions require specialised labour and averagely more assembly and disassembly times.





# Bushing-type scaffolding.

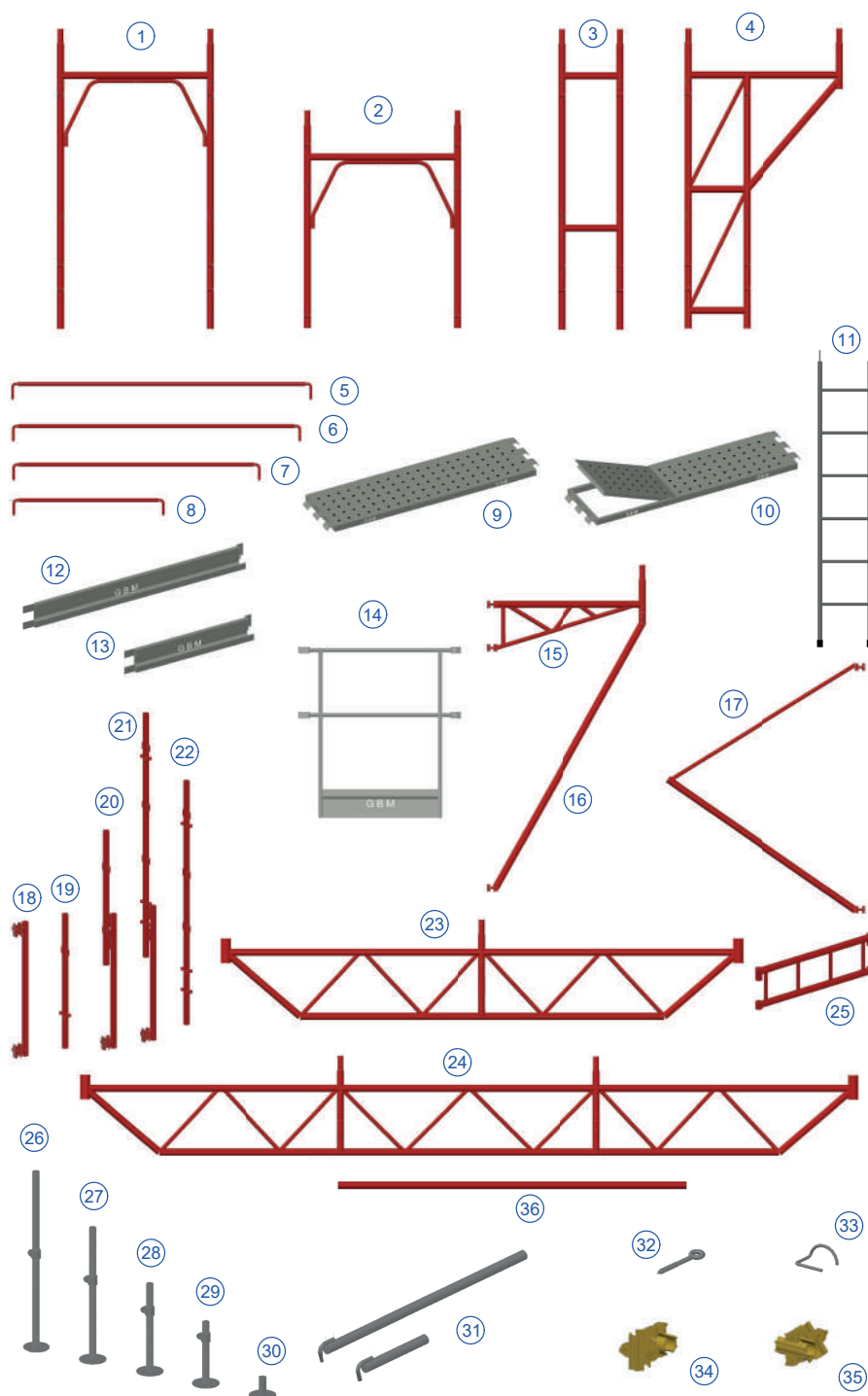
DIN   
UNI EN 12810

**GBM bushing-type italian scaffolding** are just what you need for a safe scaffolding that is quick and easy to use.

Connection between the frameworks is carried out by means of pipe horizontal ledgers and diagonal braces featuring - at the ends - forged steel pins, which are inserted into bushings (rings) welded onto the uprights of the frames.

GBM bushing-type scaffolding falls within the class of "facade scaffolding" with prefabricated frames. It is obtained by connecting several steel frames with standard height and depth on which the bases and parapets are fixed.

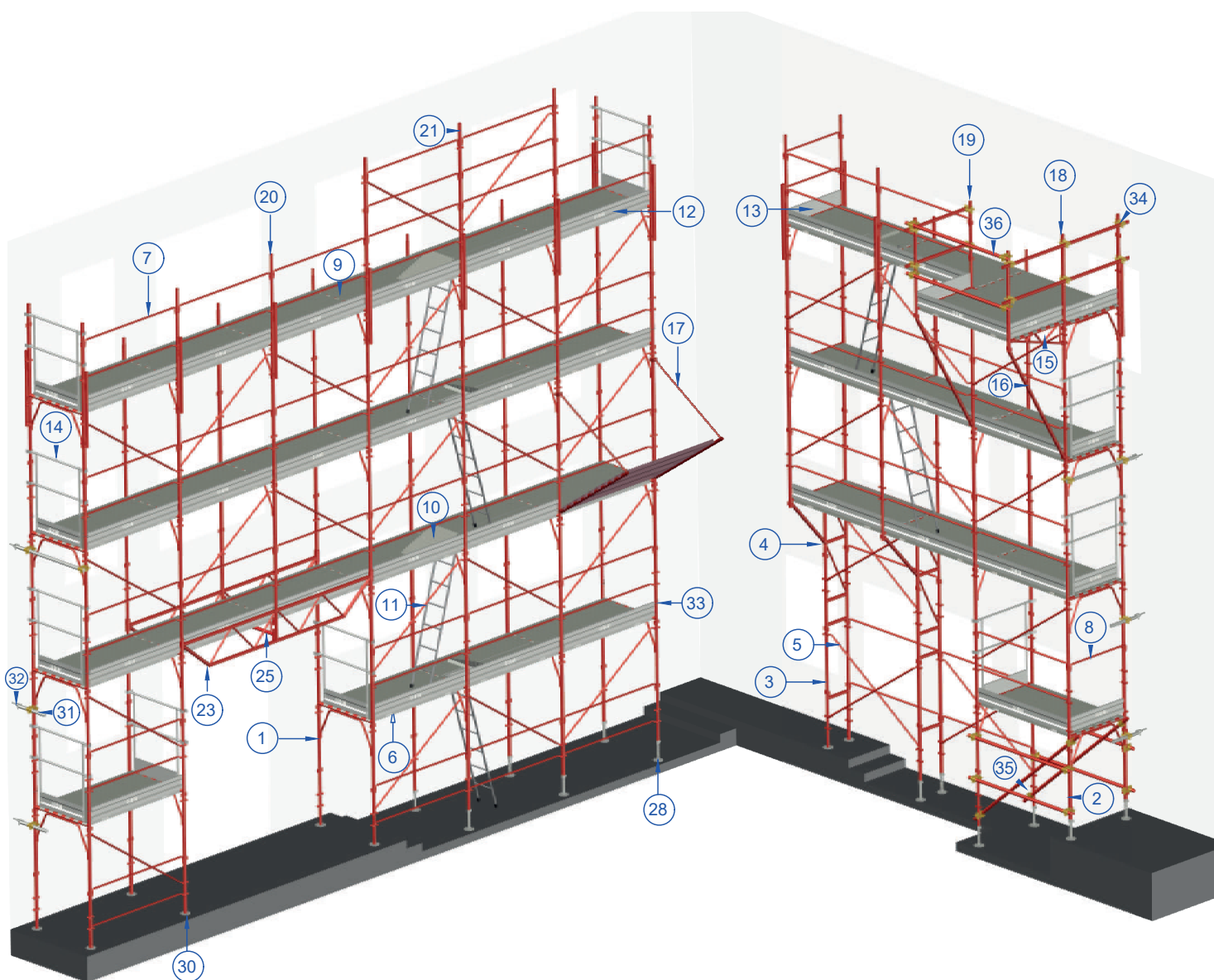
It is the easiest scaffolding to use. Being standardised and quick to assemble and disassemble, it does not require special manpower skills. It comes with the respective documents ("scaffolding instructions booklet").







1	Frame	18,50 kg	19	1,10 mt top end rail	3,50 kg
2	Half frame	14,00 kg	20	1,10 mt reinforced top end rail	6,20 kg
3	Lower narrow starting frame	17,20 kg	21	2,00 mt reinforced top end rail	14,80 kg
4	Upper narrow starting frame	22,50 kg	22	2,00 mt top end rail	6,90 kg
5	Facade diagonal brace	3,10 kg	23	3,60 mt opening truss	27 kg
6	Plan diagonal brace	3,10 kg	24	5,40 mt opening truss	39 kg
7	Facade horizontal ledger	2,60 kg	25	Truss' connection	5 kg
8	End horizontal ledger	2,60 kg	26	100 cm adjustable base plate	4 kg
9	Platform	14,20 kg	27	75 cm adjustable base plate	3 kg
10	Platform with trapdoor	26,00 kg	28	50 cm adjustable base plate	2,25 kg
11	Ladder	8,50 kg	29	30 cm adjustable base plate	2,15 kg
12	180 cm toeboard	4,70 kg	30	Simple base plate	0,90 kg
13	105 cm toeboard	2,80 kg	31	50/100 cm wall tie	1,50 kg - 3,20 kg
14	End guardrail	8,50 kg	32	Eyebolt	0,20 kg
15	105 cm external bracket	16,50 kg	33	Scaffold pin	0,10 kg
16	Bracketstrut for bracket	16,50 kg	34	Double coupler	1,40 kg
17	Gravel guard	12,10 kg	35	Swivel coupler	1,60 kg
18	Reinforcement with 2 couplers	5,20 kg	36	48x3,2 pipe	3,30kg/m





# Pin-type scaffolding.

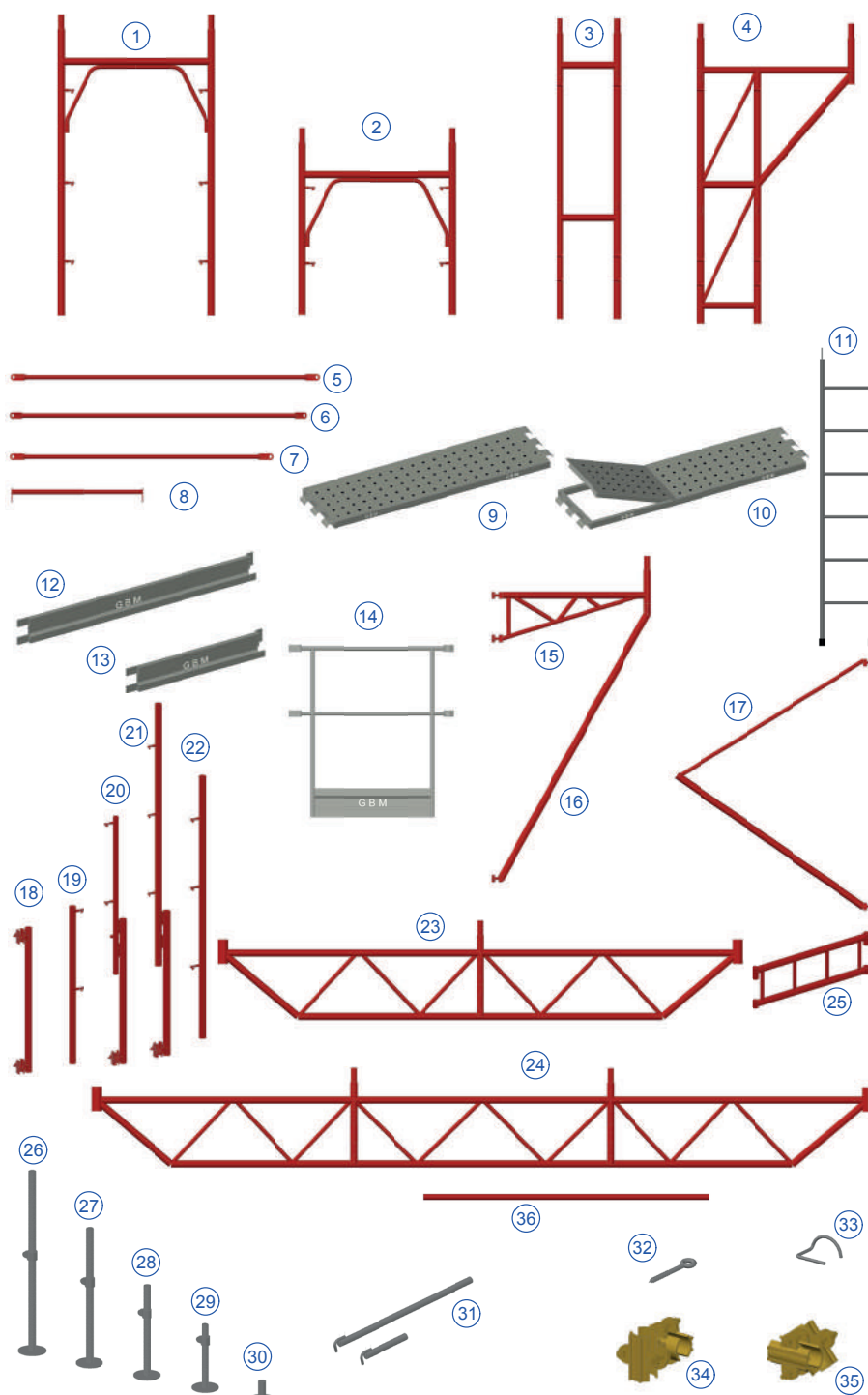
DIN   
UNI EN 12810

GBM pin-type italian scaffolding are the best any building company can wish for in terms of a scaffolding that is safe, quick to assemble and simple to use.

Connection between the frames is carried out by means of pipe horizontal ledgers and diagonal braces featuring - at the ends - holes with diameter appropriate for the insertion of the pins welded on the uprights of the frameworks.

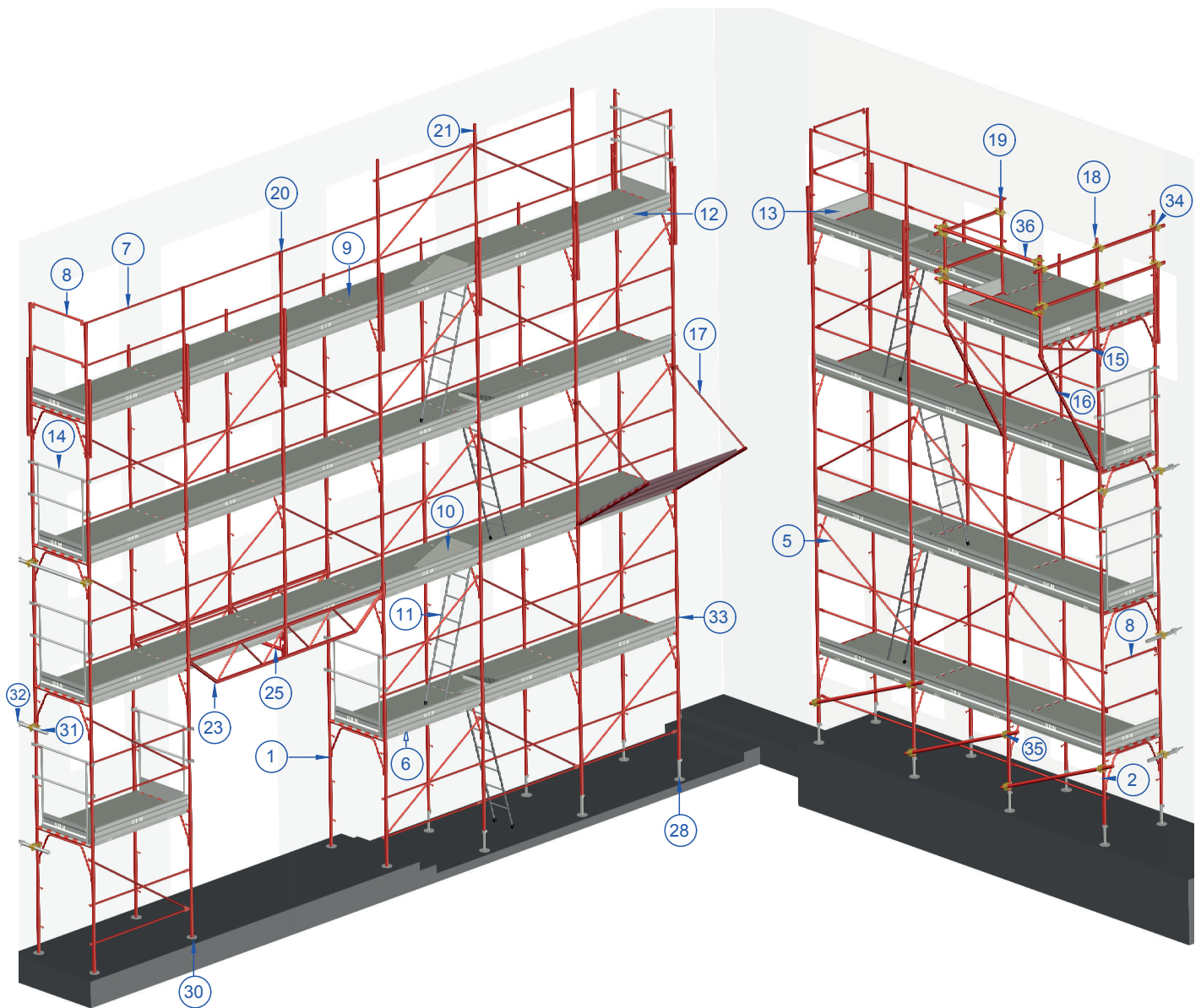
GBM pin-type scaffolding falls within the class of the so-called "facade scaffolding" with prefabricated frameworks. Several metal frameworks (with standard height and depth) are connected to each other. Bases and parapets are fixed thereon.

Its standardisation and the fact that it is quick to assembly and disassemble make it a scaffolding that is extremely easy to use. Besides not requiring special manpower skills, it comes with the respective documents, i.e. the "scaffolding instructions booklet".





1	Frame	18,50 kg	19	1,10 mt top end rail	3,50 kg
2	Half frame	14,00 kg	20	1,10 mt reinforced top end rail	6,20 kg
3	Lower narrow starting frame	17,20 kg	21	2,00 mt reinforced top end rail	14,80 kg
4	Upper narrow starting frame	22,50 kg	22	2,00 mt top end rail	6,90 kg
5	Facade diagonal brace	3,10 kg	23	3,60 mt opening truss	27 kg
6	Plan diagonal brace	3,10 kg	24	5,40 mt opening truss	39 kg
7	Facade horizontal ledger	2,60 kg	25	Truss' connection	5 kg
8	End horizontal ledger	2,60 kg	26	100 cm adjustable base plate	4 kg
9	Platform	14,20 kg	27	75 cm adjustable base plate	3 kg
10	Platform with trapdoor	26,00 kg	28	50 cm adjustable base plate	2,25 kg
11	Ladder	8,50 kg	29	30 cm adjustable base plate	2,15 kg
12	180 cm toeboard	4,70 kg	30	Simple base plate	0,90 kg
13	105 cm toeboard	2,80 kg	31	50/100 cm wall tie	1,50 kg - 3,20 kg
14	End guardrail	8,50 kg	32	Eyebolt	0,20 kg
15	105 cm external bracket	16,50 kg	33	Scaffold pin	0,10 kg
16	Bracketstrut for bracket	16,50 kg	34	Double coupler	1,40 kg
17	Gravel guard	12,10 kg	35	Swivel coupler	1,60 kg
18	Reinforcement with 2 couplers	5,20 kg	36	48x3,2 pipe	3,30kg/m





# Pipe-coupling scaffolding.

**Besides being greatly versatile, GBM pipe-coupling scaffolding enable creating any type of temporary work within a short time.**

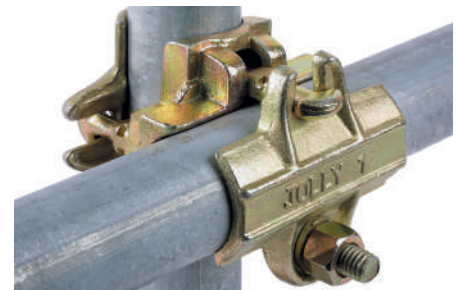
Contrary to fixed scaffolding with prefabricated frames, this type of scaffolding enables connecting pipes at any distance and position, thus obtaining a variable geometry system.

This system enables performing any types of works which would otherwise be impossible to achieve using conventional techniques.

The pipe-coupling scaffolding is the ideal solution for achieving high quality and resistance of the single components, combined with a theoretically infinite flexibility of use.

## **GBM tube-coupler scaffolding comes with the following features:**

- » Pipe material: S235JR steel
- » Pipe protection: Black dip coating or hot-dip galvanization according to the UNI EN ISO 1461 standard, with a guaranteed minimum thickness of 55 microns;
- » Pipe outer diameter: 48.3 mm
- » Pipe nominal thickness: 3.20 mm
- » Pipe length: from 40 to 600 cm
- » Coupling obtained according to the UNI-EN74 standard
- » Coupling protection: Tropicalisation with guaranteed minimum thickness of 8 microns



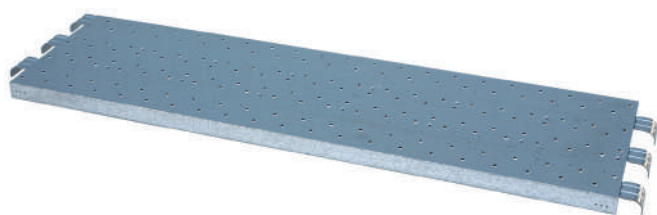






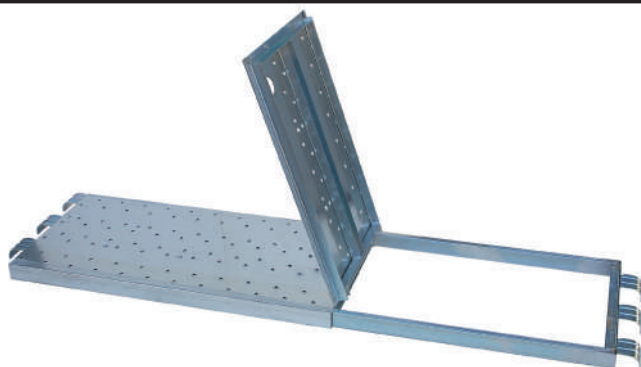
**We - at GBM - offer one of the widest range of scaffolding accessories available in Italy.**

Some of these accessories can make assembling and disassembling a scaffolding easier.



**Galvanized platform**  
weight 14,20kg

CODE  
**P016**



**Platform with trapdoor**  
weight 26kg

CODE  
**P017**



**Galvanized ladder**  
weight 8,50kg

CODE  
**P018**



**Galvanized toeboard**  
length 1,8 m weight 4,70kg

CODE  
**P019**



**Galvanized toeboard**  
length 1 m weight 2,80kg

CODE  
**P020**



**Scaffold pin**  
ø 8 weight 0,10kg

CODE  
**P021**

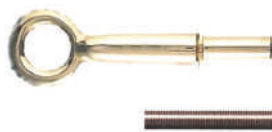




**Eyelet for scaffolding**

ø 22 mm  
120-200 mm  
weight 0.20kg

CODE  
**P008**



**Anchor eye for scaffolding**

ø 22 mm  
M12x90 mm  
weight 0.50 kg

CODE  
**P009**



**Anchor eye for scaffolding**

ø 50 mm  
M12x90 mm  
weight 0.48 kg

CODE  
**P010**



**Anchoring plugs**

ø60mm h35mm weight 0,95kg

CODE  
**P011**



**Tubular anchorage with hook for scaffolding**

pipe ø48,3x2,75mm ø20  
500mm weight 1,90kg

CODE  
**P012**



**Base plate for scaffolding**

ø40mm pipe ø140x6mm  
weight 0,90kg

CODE  
**P001**



**Base jack painted**

ø38mm pipe 6,35mm pitch  
plate ø140x6  
350mm weight 2,15kg  
500mm weight 2,25kg  
750mm weight 3,00kg  
1000mm weight 4,00kg

CODE  
**P002**



**Base jack galvanized**

ø38 mm 8.00 mm pitch  
150x150x5 plate  
350 mm weight 2.30 kg  
500 mm weight 2.40 kg  
750 mm weight 3.20 kg  
1000 mm weight 4.25 kg

CODE  
**P004**



**Swivel base jack galvanized**

ø38 mm pipe 8.00 mm pitch  
ø150x150x5 plate  
500 mm weight 3.00 kg  
1000 mm weight 4.90kg

CODE  
**P005**



## GBM couplers are essential to build scaffolding.



**Simple coupler for scaffolding**  
for  $\varnothing 48,3\text{mm}$  weight 0,73kg

CODE  
**GS03**



**Double coupler 2 bolts**  
for  $\varnothing 48,3/48,3\text{mm}$  weight 1,40kg

CODE  
**GO17**



**Swivel coupler**  
for  $\varnothing 48,3/48,3\text{mm}$  weight 1,60kg

CODE  
**GG18**



**Double coupler four bolts**  
for  $\varnothing 48,3/48,3\text{mm}$  thickness 5mm weight 1,35kg

CODE  
**GO15**



**Swivel coupler four bolts**  
for  $\varnothing 48,3/48,3\text{mm}$  thickness 5mm weight 1,76kg

CODE  
**GG16**



**Bolt and nut four coupler**  
M12 L75 Weight 0,10 kg

CODE  
**G29**



**Double coupler EN74 heavy type**  
for  $\varnothing 48,3/48,3\text{mm}$  weight 1,15kg

CODE  
**GO06**



**Swivel coupler EN74 heavy type**  
for  $\varnothing 48,3/48,3\text{mm}$  weight 1,40kg

CODE  
**GG07**



**Joint pin for scaffolding**  
 $\varnothing 40 \times 200\text{mm}$  weight 0,50kg

CODE  
**G28**





**Half swivel coupler two bolts EN74**  
for  $\varnothing 48,3$ mm weight 0,68kg

CODE  
**GS02**



**Double coupler EN74 light type**  
for  $\varnothing 48,3/48,3$ mm weight 1,05kg

CODE  
**GO04**



**Swivel coupler EN74 light type**  
for  $\varnothing 48,3/48,3$ mm weight 1,15kg

CODE  
**GG05**



**Double coupler EN74 galvanized**  
for  $\varnothing 48,3/60$ mm weight 2,10kg

CODE  
**GO22**



**Swivel coupler EN74 galvanized**  
for  $\varnothing 48,3/60$ mm weight 2,20kg

CODE  
**GG23**



**Wrench**  
Weight 0,25 kg

CODE  
**G30**



**Putlog coupler galvanized**  
for  $\varnothing 48,3/48,3$ mm weight 0,75kg

CODE  
**G24**



**Grider clamp-gravlock galvanized**  
for  $\varnothing 48,3$ mm weight 1,50kg

CODE  
**G25**



**PVC coupling cover**  
weight 0,10kg

CODE  
**PO15**



[www.gbmitaly.com](http://www.gbmitaly.com)

**G.B.M. Building Equipments S.r.l.**

Via Alessandro Volta, 1 - 25024 Porzano Di Leno (Brescia) - Italy

Mail [info@gbmitaly.com](mailto:info@gbmitaly.com) - Tel +39 030 9067005